

Central Avenue Streetscape

Design Development Phase

Prepared for:

City of Naples, Florida

Prepared by:

A. Gail Boorman & Associates

Landscape Architecture + Urban Design + Planning

Central Avenue Streetscape

Design Challenges



- Inconsistent street image
- Varying width of Right of Way
- Confusing intersections
- Conflicting movements at major intersections
- Inconsistent organization of vehicular and pedestrian spaces
- Haphazard on street parking
- Lack of pedestrian amenities
- Existing utilities conflicts
- Important street for truck and service vehicles to access southern community
- Access for library and school complexes
- Mix of residential/commercial/institutional land uses

Central Avenue Streetscape



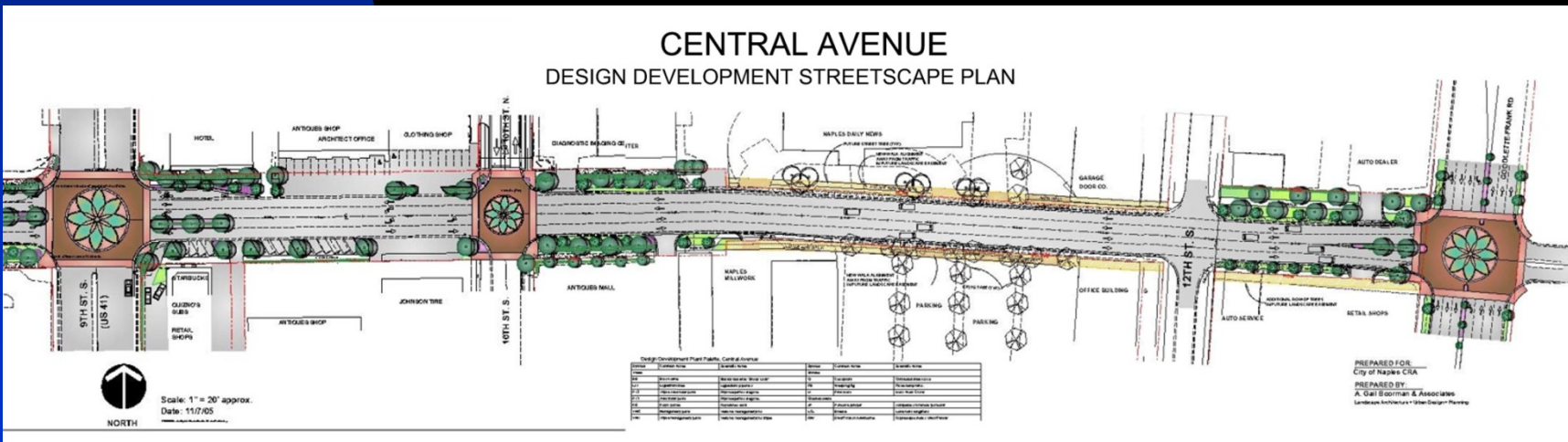
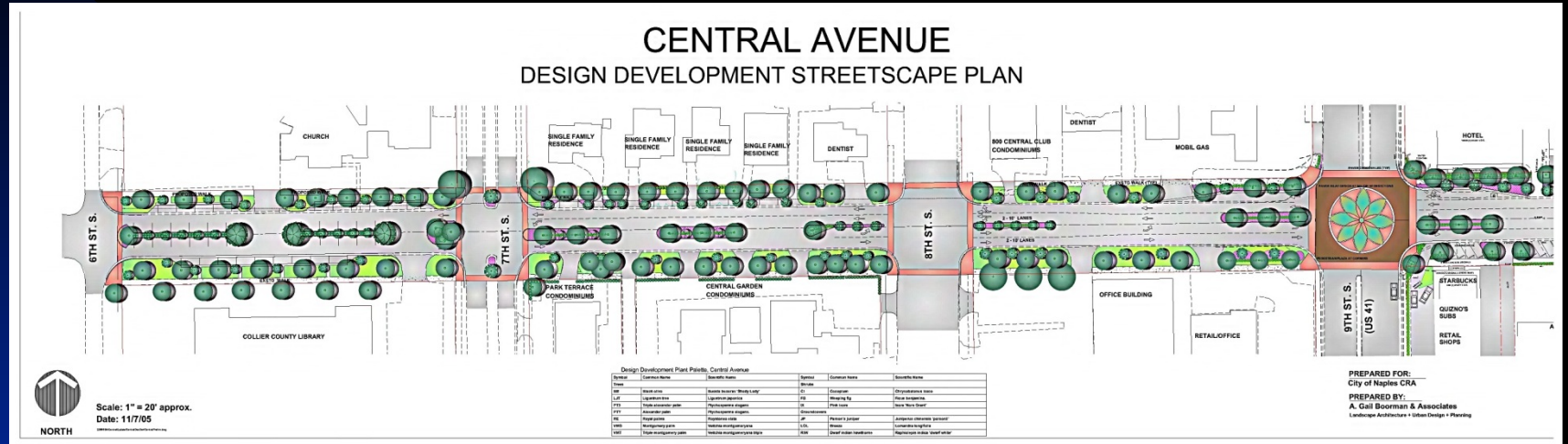
Design Goals

- Create a high quality street environment
- Create signature identity for downtown district
- Traffic calming, resolve conflicts
- Organize vehicular and pedestrian spaces in a consistent and coherent manner
- Provide on street parking
- Create an inviting pedestrian environment
- Soften appearance of existing utilities
- Find ways to incorporate canopy trees
- Provide amenities that complement existing buildings and land uses
- Provide amenities to complement and enhance the goals of the CRA plan



Central Avenue Streetscape

Overall Master Plan View

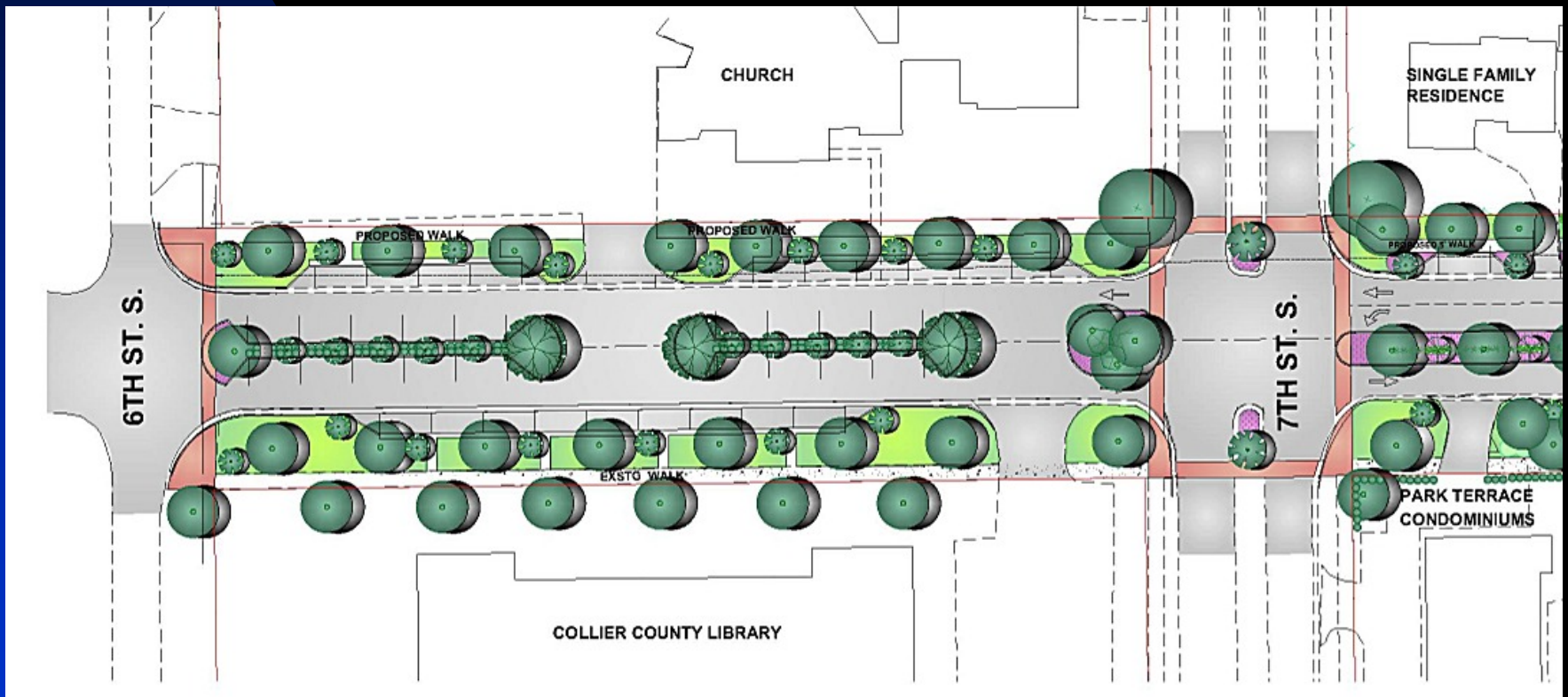


Central Avenue Streetscape

West Corridor Study
6th Street to US 41 (9th Street)

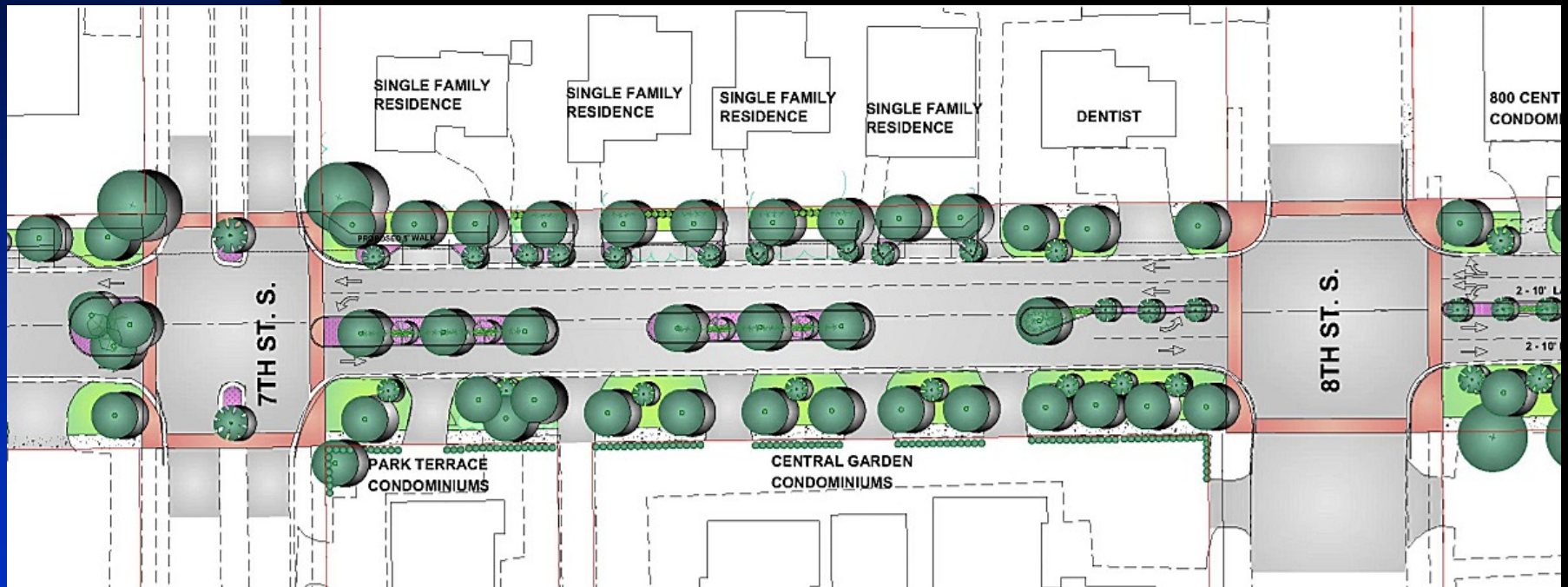
Central Avenue Streetscape

6th Street to 7th Street Plan View



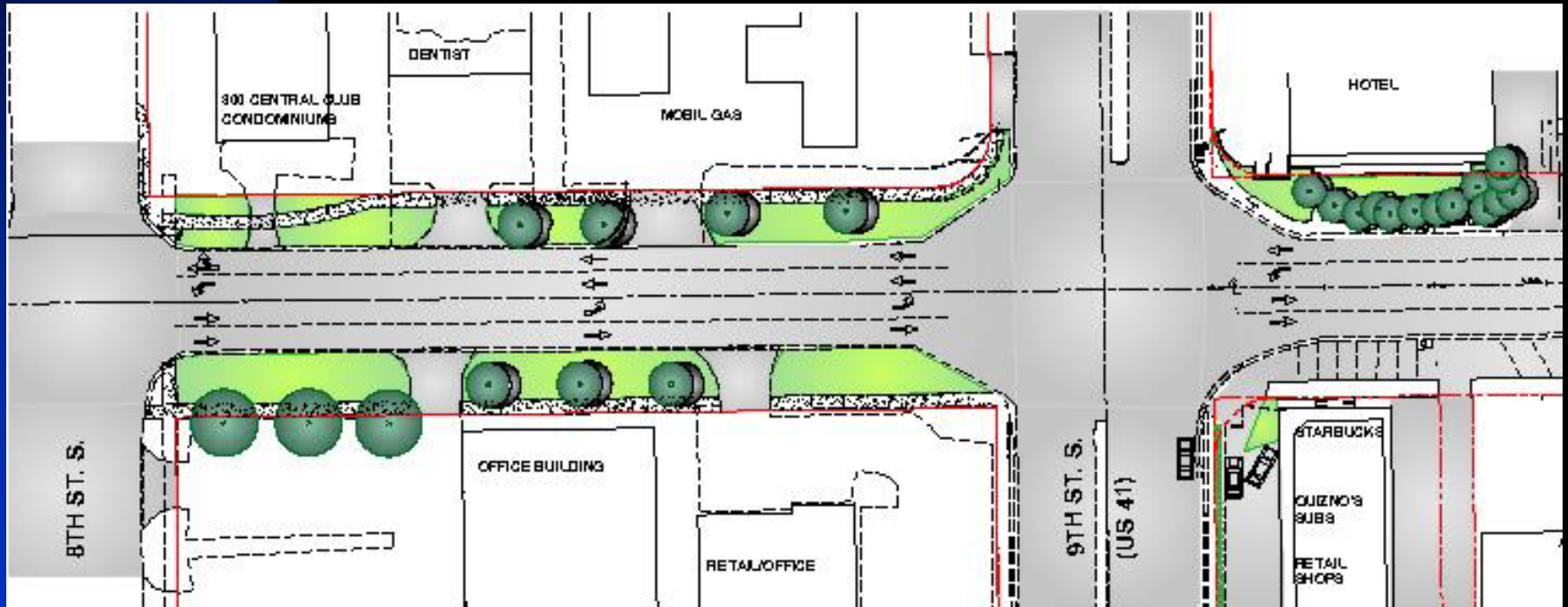
Central Avenue Streetscape

7th Street to 8th Street Plan View



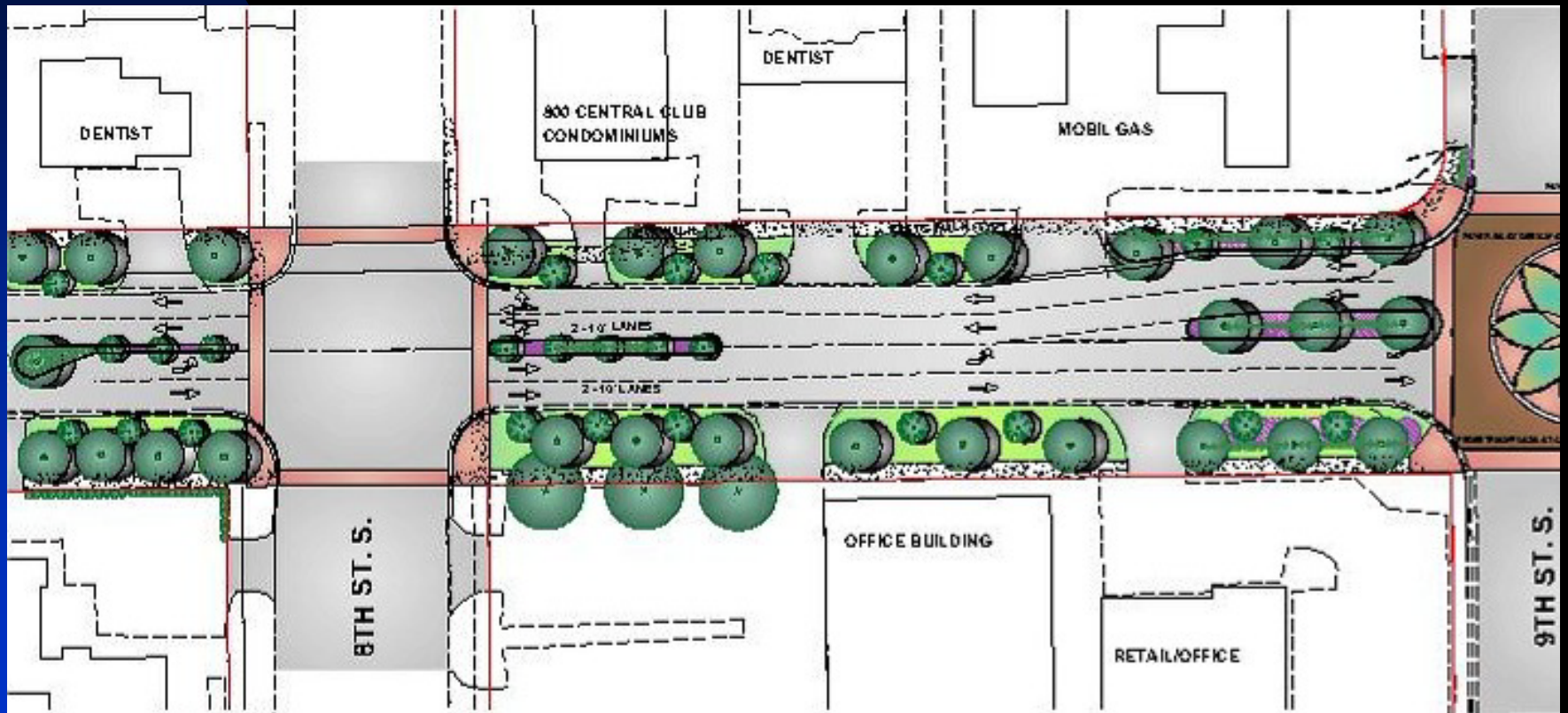
Central Avenue Streetscape

Intersection at US 41 (9th Street) Existing Conditions View



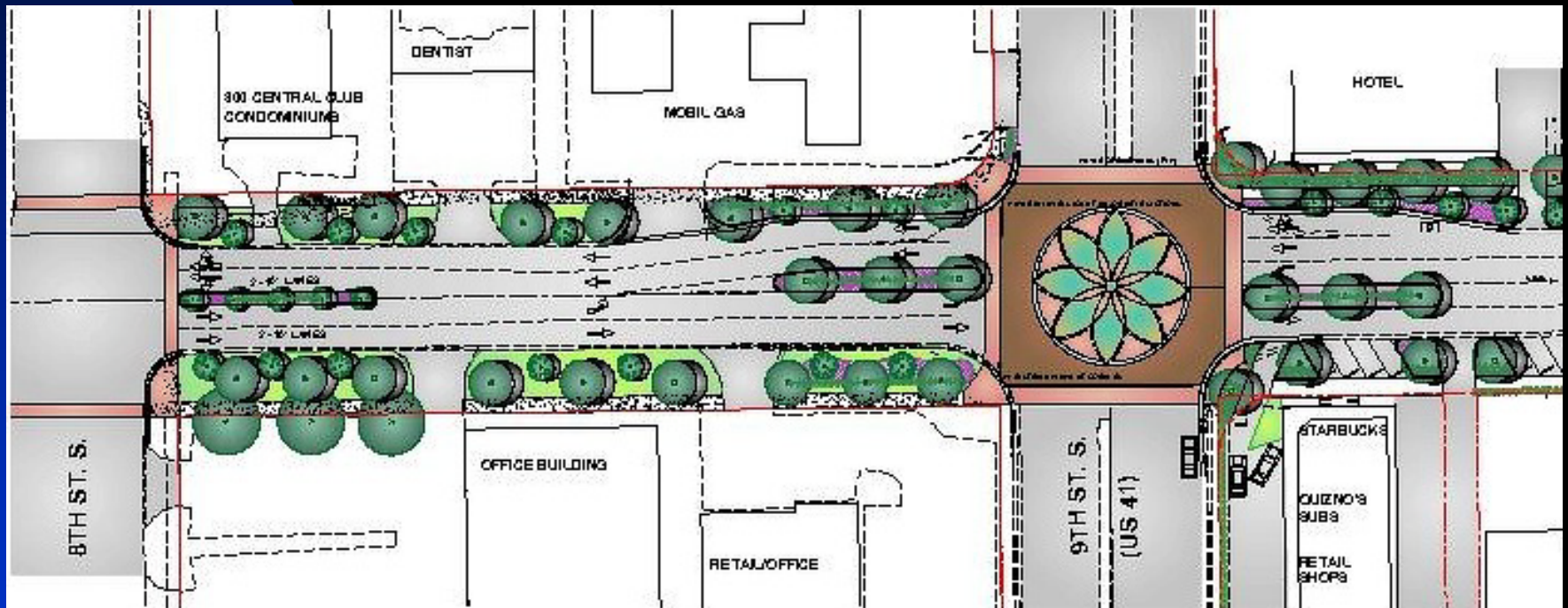
Central Avenue Streetscape

8th Street to US 41 (9th Street) Plan View



Central Avenue Streetscape

Intersection at US 41 (9th Street) Plan View

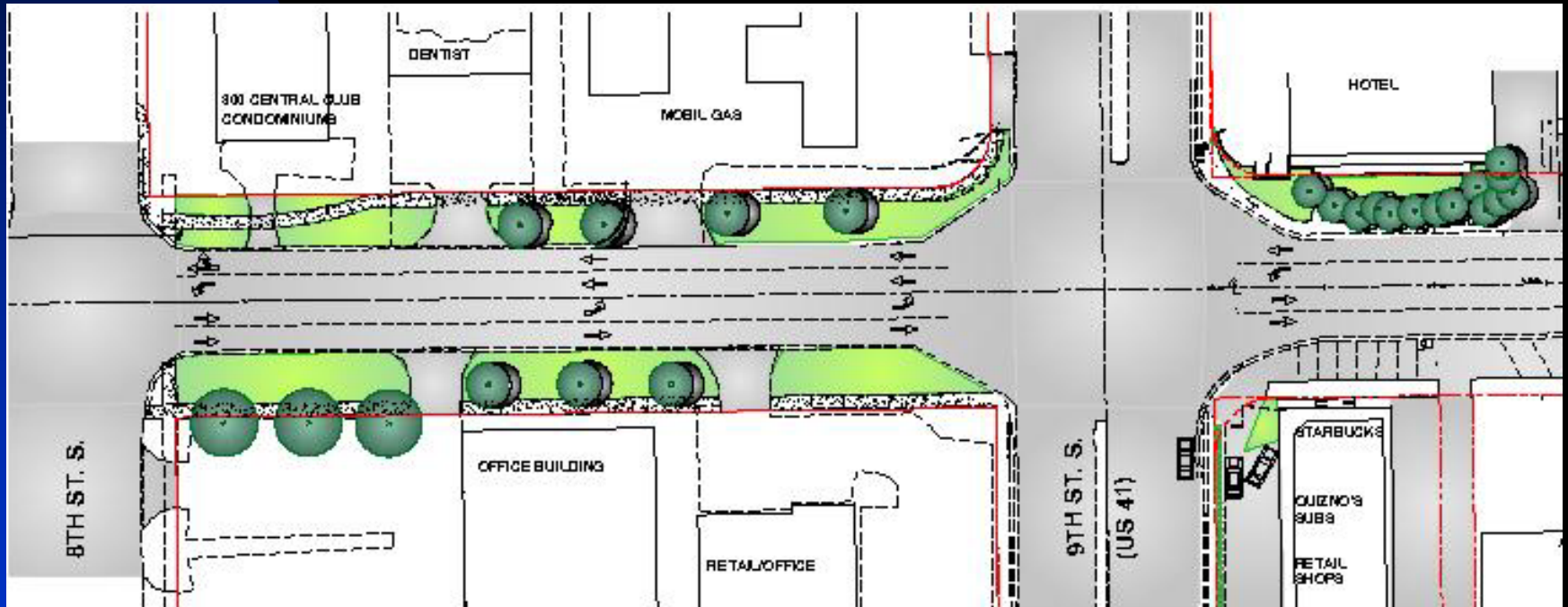


Central Avenue Streetscape

First Block Study
US 41 (9th Street) to 10th Street
Chronology of Plans

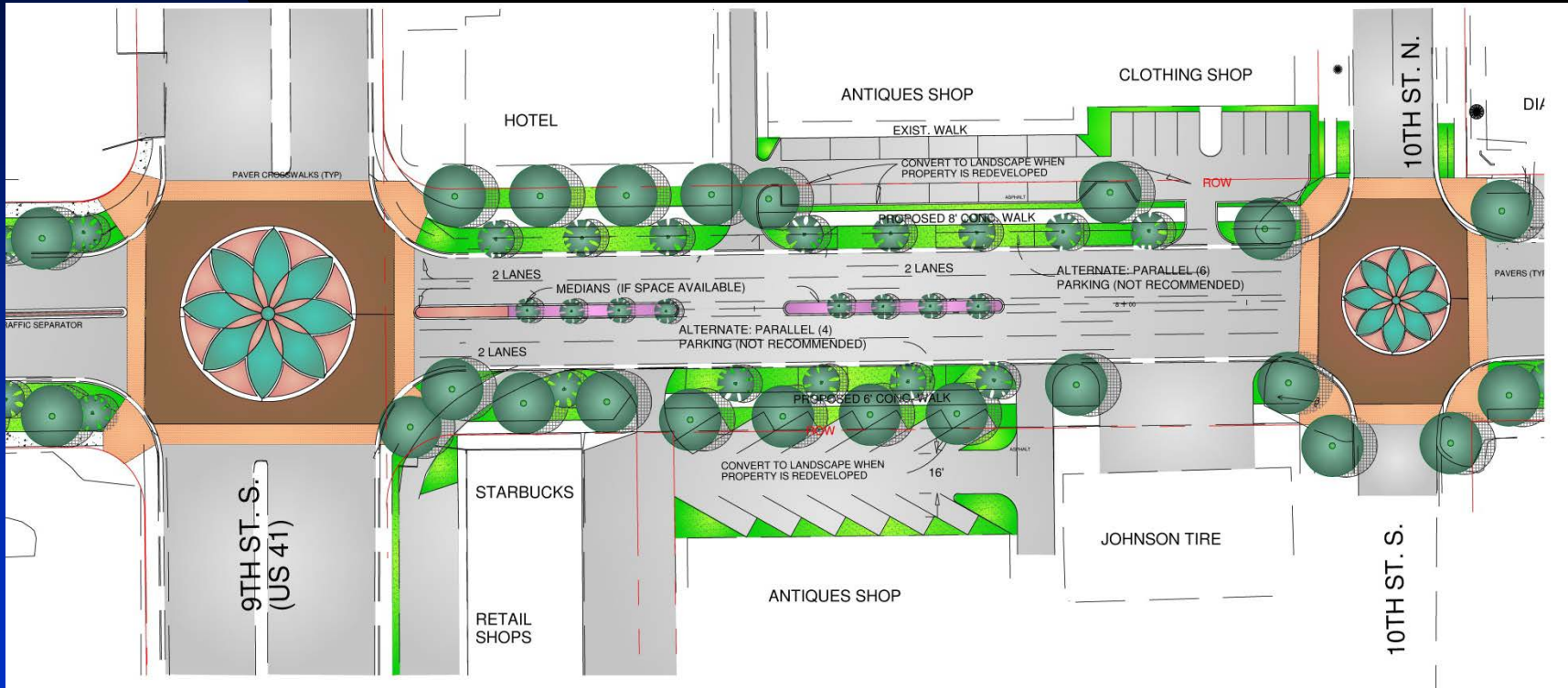
Central Avenue Streetscape

Intersection at US 41 (9th Street) Existing Conditions View



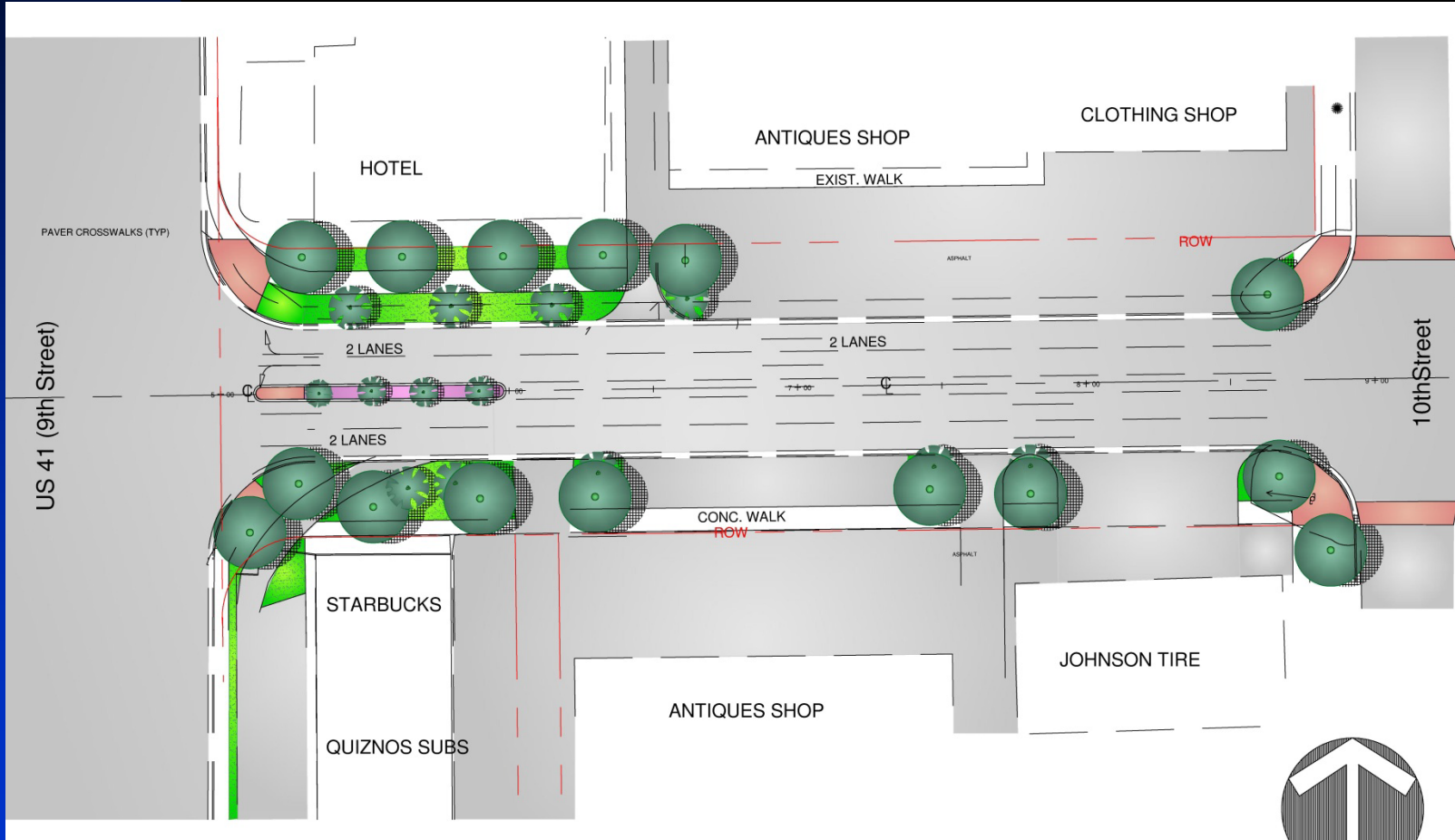
Central Avenue Streetscape

First Block Study US 41 (9th Street) to 10th Street “Previous” Plan View 1



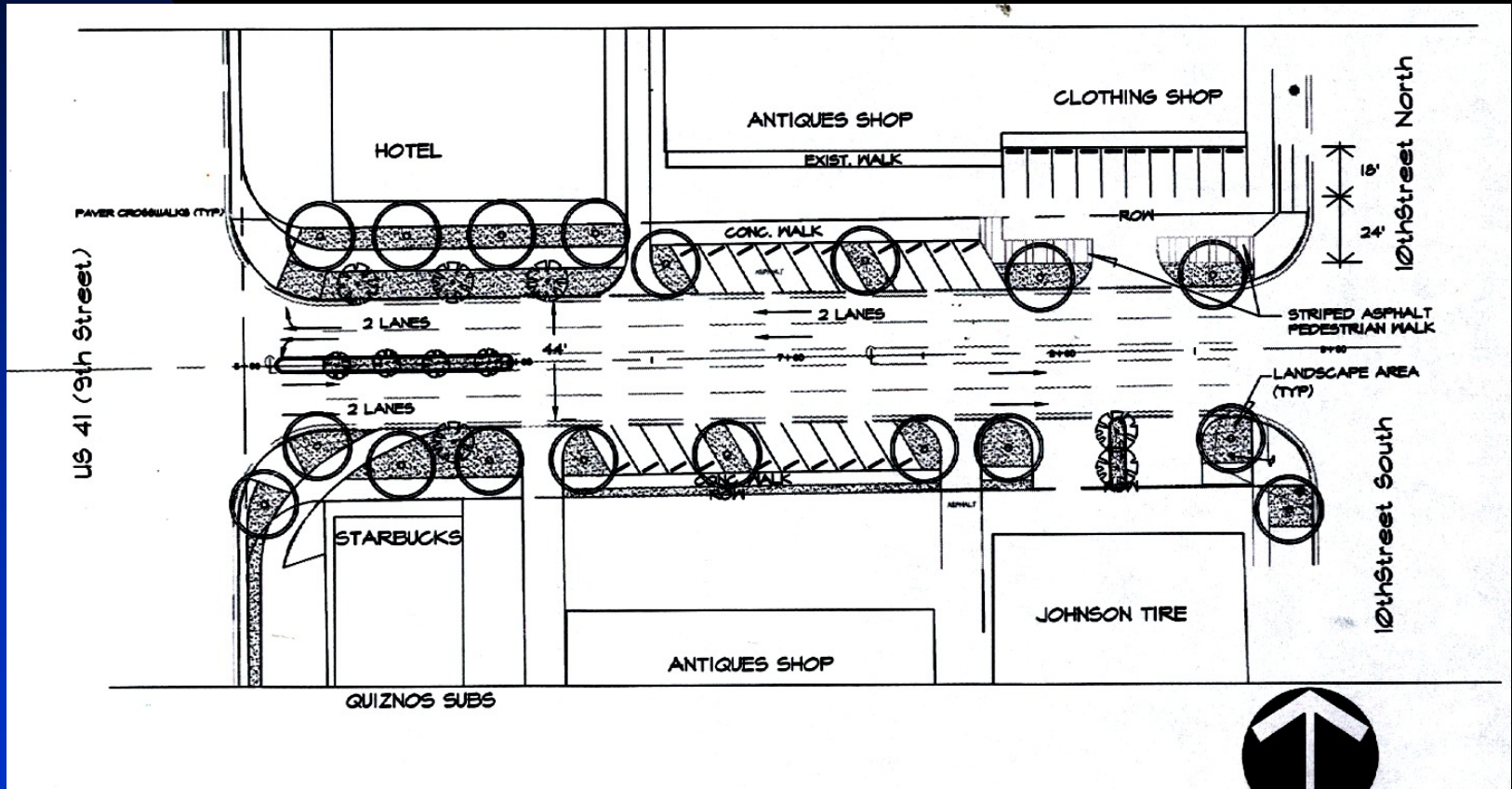
Central Avenue Streetscape

First Block Study US 41 (9th Street) to 10th Street “Previous” Plan View 2



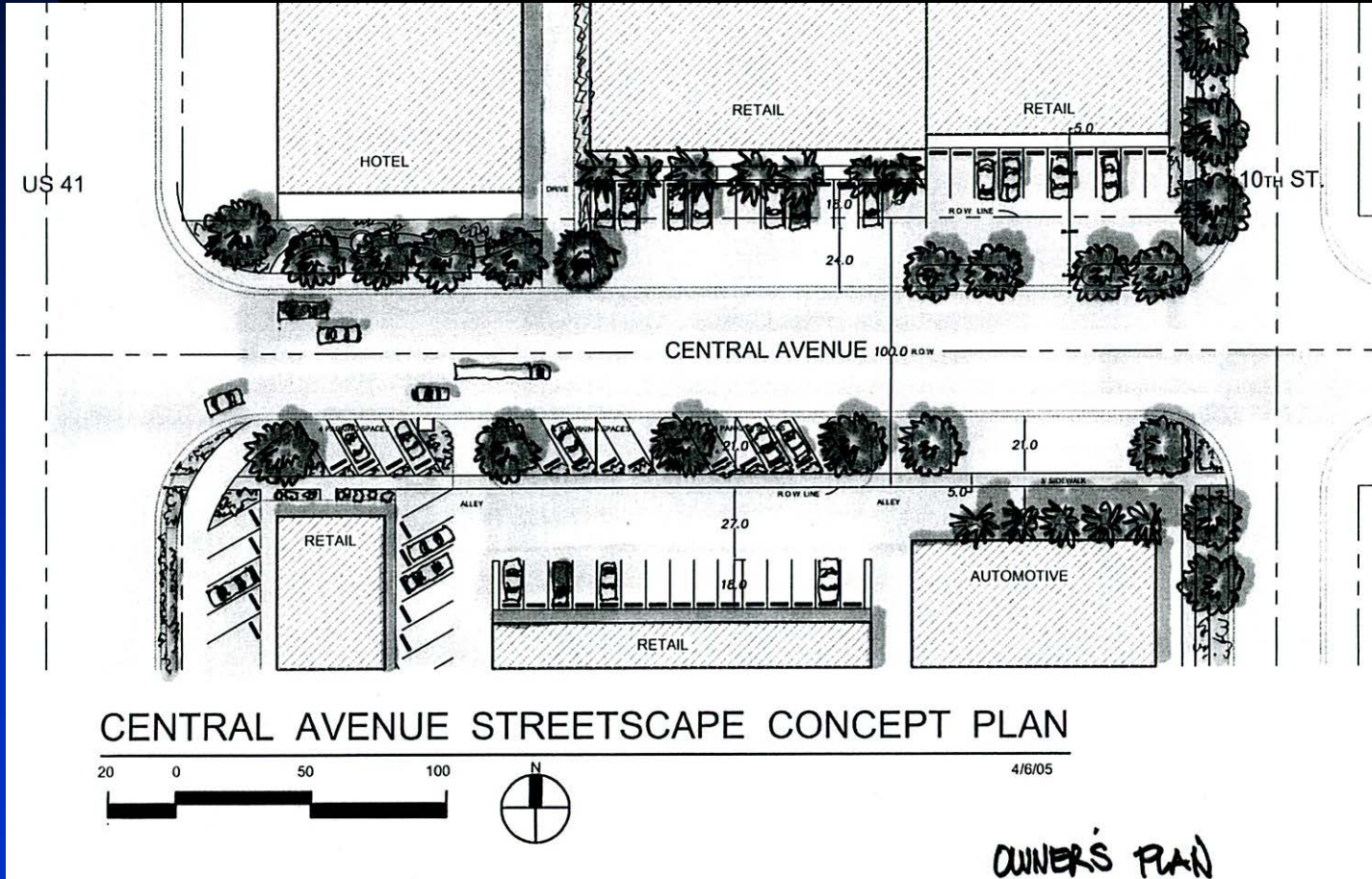
Central Avenue Streetscape

First Block Study US 41 (9th Street) to 10th Street “Previous” Plan View 3



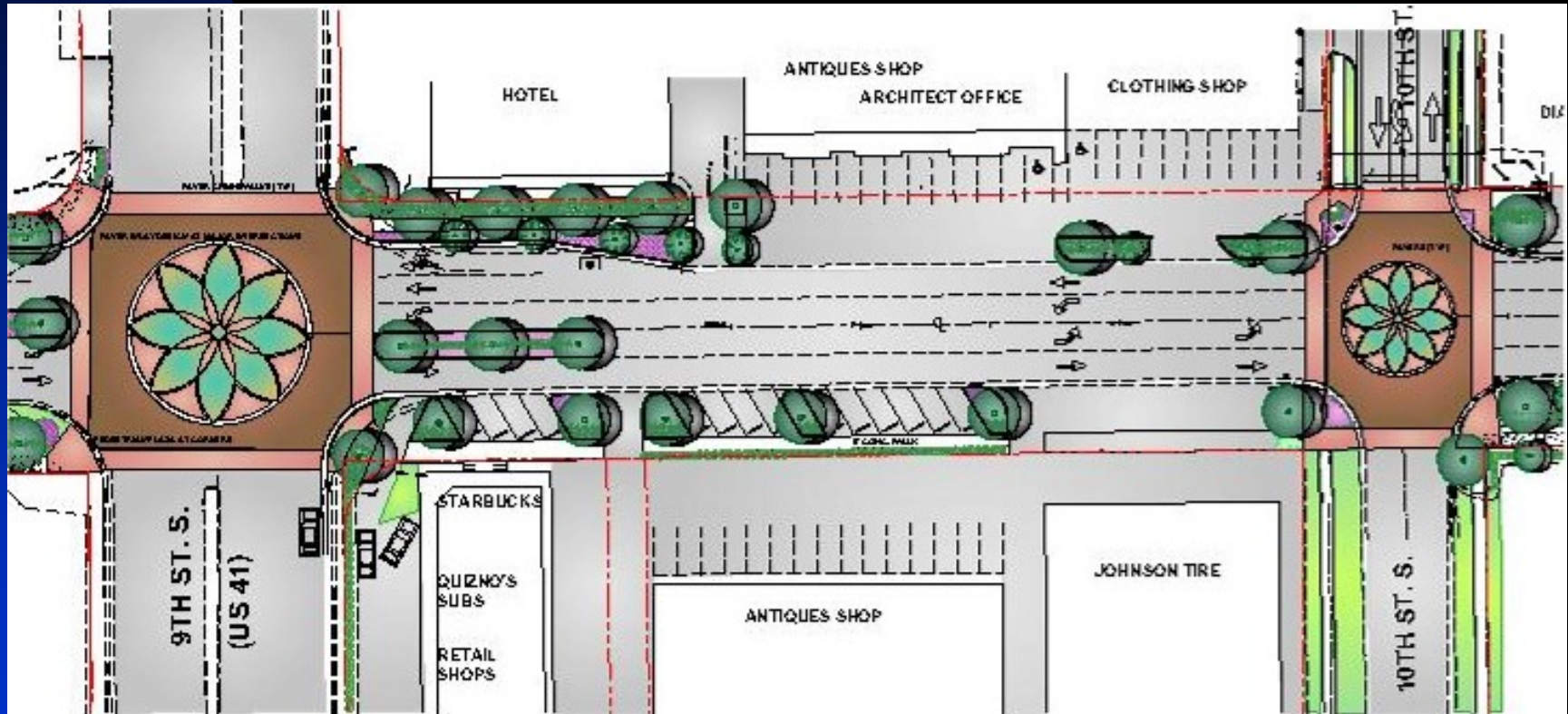
Central Avenue Streetscape

First Block Study US 41 (9th Street) to 10th Street "Owners" Plan View



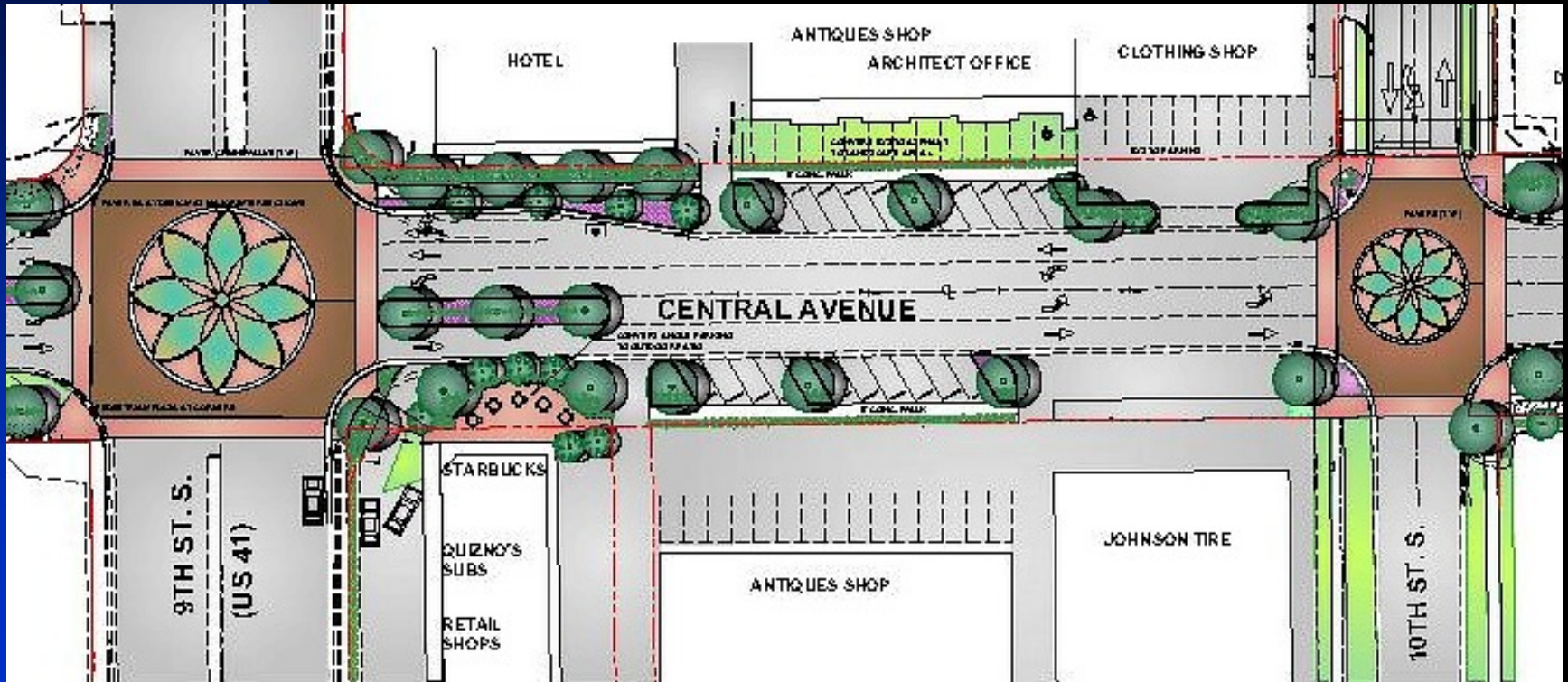
Central Avenue Streetscape

US 41 (9th Street) to 10th Street
“Owner” Plan View
(Revised at Intersection)



Central Avenue Streetscape

US 41 (9th Street) to 10th Street
“Alternate” Plan View
CRAAB recommended

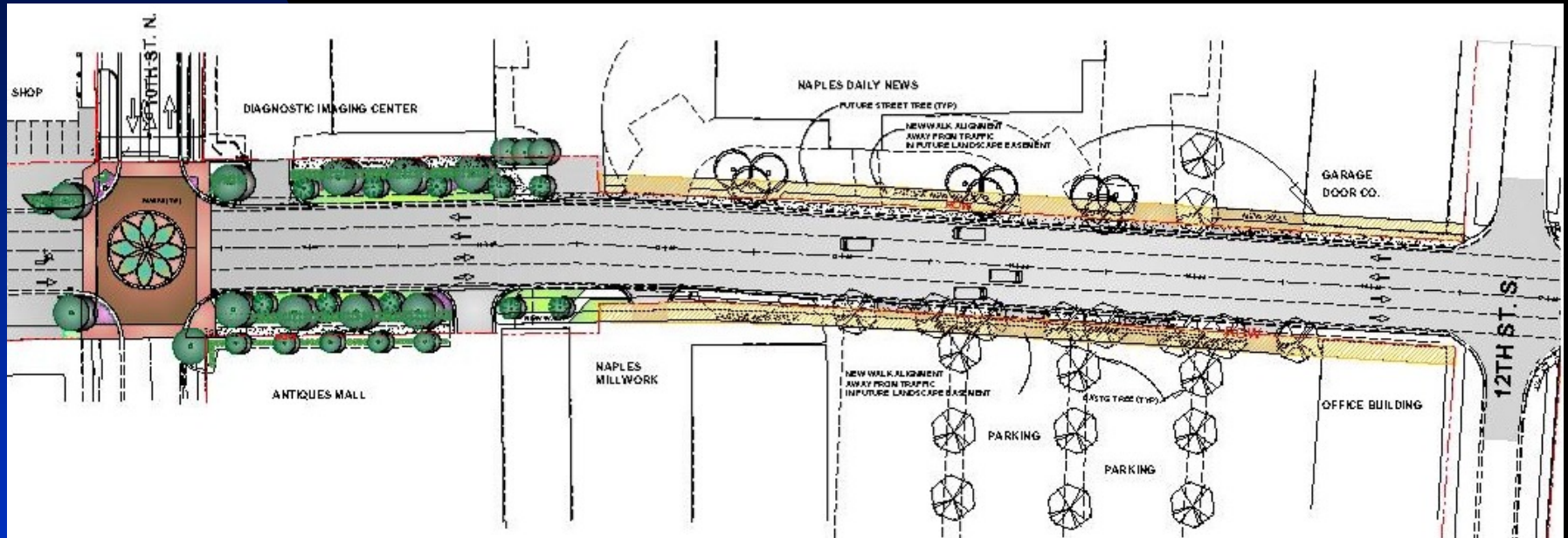


Central Avenue Streetscape

East Corridor Study
10th Street to Goodlette Frank Road

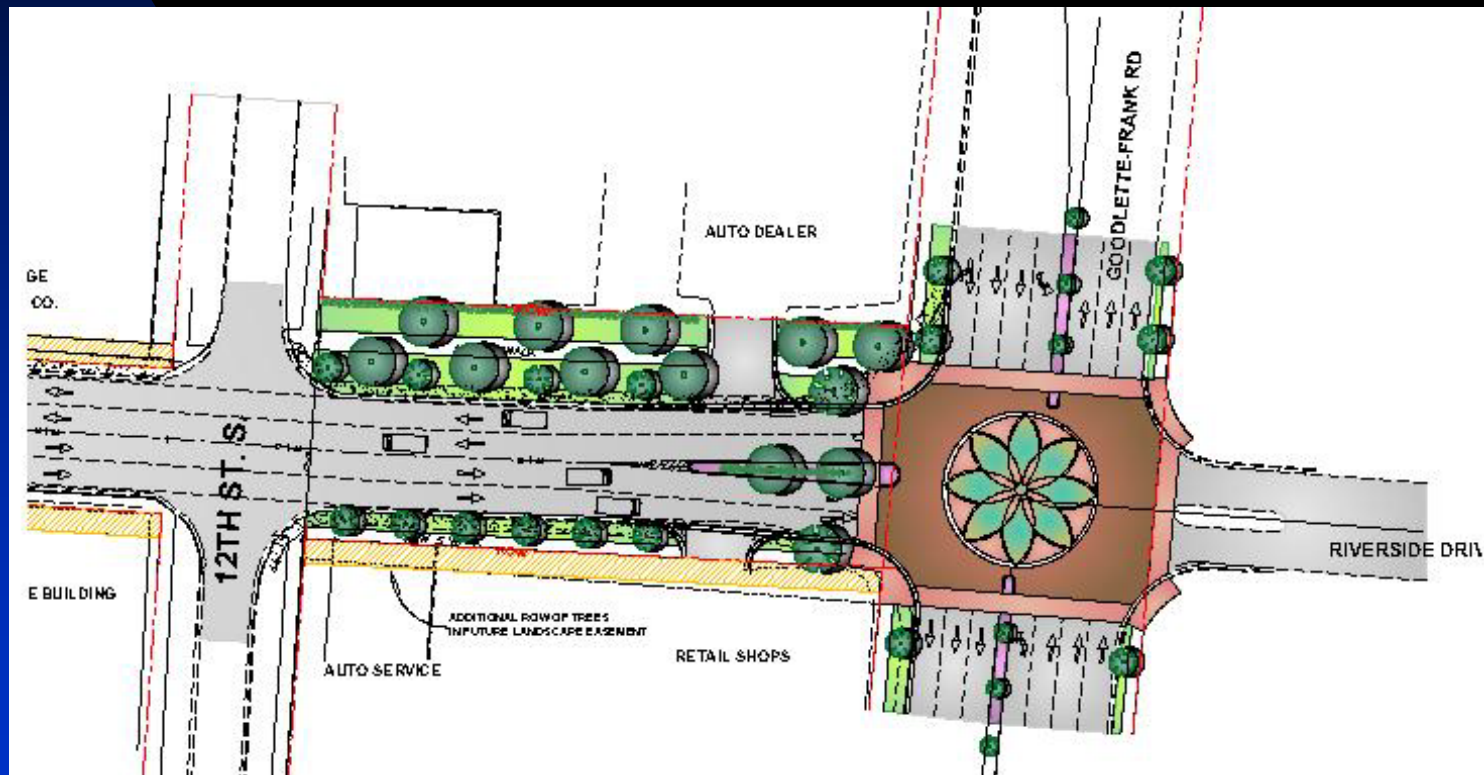
Central Avenue Streetscape

10th Street to 12th Street Plan View



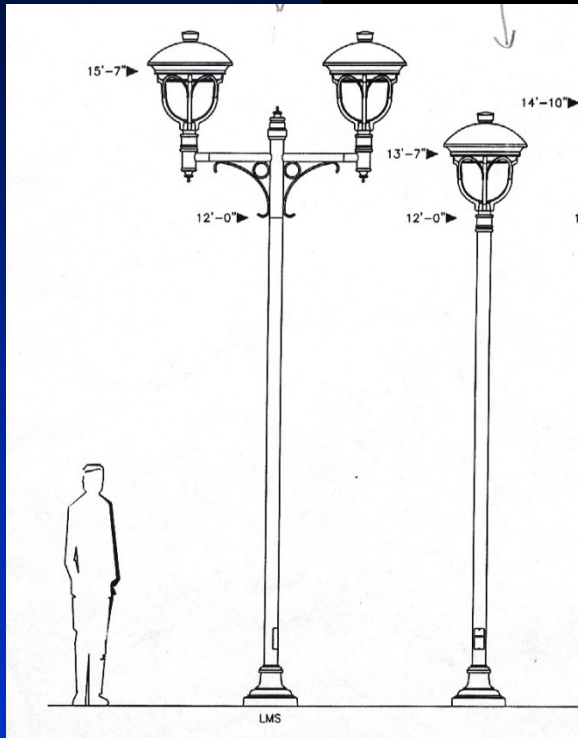
Central Avenue Streetscape

12th Street to Goodlette Frank Road Plan View



Central Avenue Streetscape

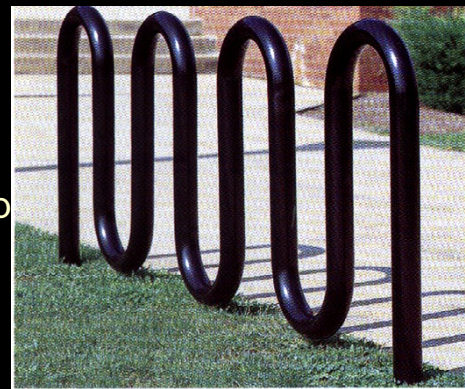
Site Furnishings and Materials Palette Pedestrian Furniture



Lighting Fixtures
Lumec 'Optima' Series
Twin and Single



Pedestrian Bench
DuMor Bench 94
6' length



Bike Rack
DuMor MultiLoop
Bike Rack 125
5 bikes



Trash Receptacle
DuMor Receptacle 17
Dome Cover (not shown)

Central Avenue Streetscape

Site Furnishings and Materials Palette Traffic Control Signage

